

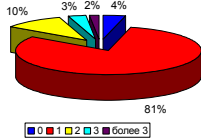


Objectives. To obtain a greater understanding of men's sexual health in Siberia.

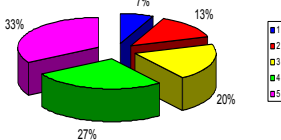
Design and Methods. A population-based study was conducted among 1280 men in Siberia. At 52 among of all cohort the level of testosterone in plasma was estimated.

Results.

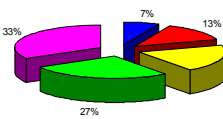
Constant sexual partner



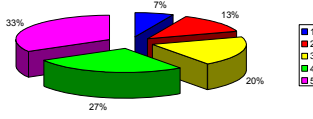
Erection



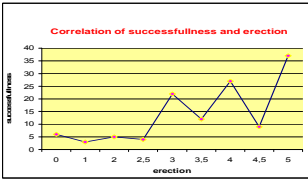
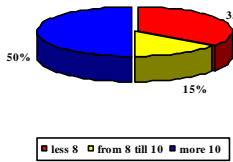
Sexual function



Successfulness



Level of testosterone (nmol/ml)



Conclusion. In Siberia a status of sexual health of the men is quite satisfactory as a whole, but they are more often hypogonadal.